

BOND UPDATE

October 2023

#ThankYouVoters

The background of the image features several square wooden blocks arranged on a dark surface. Each block has a different embossed design. One block in the foreground shows a detailed architectural drawing of a building with a dome. Another block shows a landscape with a winding path. The text is overlaid on these blocks.

2019 BOND CONSTRUCTION UPDATE

- **Waller Junior High Renovations and Additions**
 - Building pad compete.
- **Holleman Elementary Renovations**
 - New emergency generator remains scheduled for shipment on Nov. 15.
- **Priority 1 Projects**
 - Fields Store ES chillers - bids received on Sept. 27.
 - Structural plans for emergency generators are being reviewed for bids in November.

WALLER JUNIOR HIGH

PHASE 1 COMPLETION SUMMER 2023

PHASE 2 COMPLETION SUMMER 2024



WALLER JUNIOR HIGH

- Drymalla Construction working on Phase 1 punch list items.
- Phase 2 addition building pad is complete.
- Drilled Piers are 95% complete. Grade beams have started.
- Structural steel, bar joist, and metal decking are on site.
- Underground electrical in progress under new slab areas. Plumbing to follow.
- Fire sprinkler system above auditorium ceiling is complete.
- Underground sanitary complete in renovation areas.
- Overhead electrical, HVAC, and plumbing are in progress in renovation area.
- Air handlers are on-site and CVB distribution boxes are being installed.
- Sprayed fireproofing is 50% complete in renovation area.

WALLER JUNIOR HIGH



Building Pad and Grade Beams



Structural Steel and Bar Joist

WALLER JUNIOR HIGH



HVAC (CVB) Air Boxes

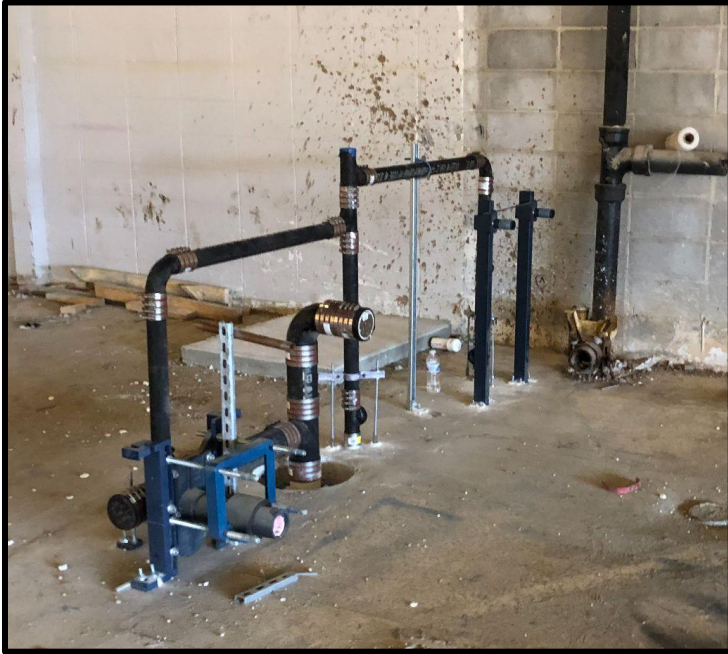




Fireproofing and
overhead electrical rough-in



WALLER JUNIOR HIGH



Sanitary Plumbing Rough-in

An architectural rendering of a modern school building interior. The scene features a large, multi-level atrium with a prominent wide staircase in the center. People, including students and adults, are shown walking on the stairs and on the ground floor, which has a tiled floor. The building has large glass windows and a clean, contemporary design. The entire image is overlaid with a semi-transparent red filter.

2022 BOND CONSTRUCTION UPDATE

- **Low Elementary (#6) & McReavy Elementary (#7)**
 - Masonry is in progress.
 - MEP install is in progress.
 - Roofing material is on-site.
 - On schedule for August 2024 school openings.
- **Elementary #8**
 - Construction documents are in progress.
 - Selection of a construction manager to Board October 2023.
- **Agricultural Science Center**
 - Construction documents are complete and out for bid.
 - Construction remains scheduled for late 2023 start.
- **Education Service Center (ESC)**
 - Design development is ongoing.
 - Construction is scheduled to start in early 2024.

- **Schultz Junior High Priority 1 - Improvements**
 - Bleacher delivery scheduled November delivery.
 - Graphics package installation has begun.
- **Priority 1 - Improvements**
 - Turlington Elementary Driveway is complete.
 - Selection of Construction Manager for November board approval

- Site paving is ongoing.
- Roof decking is in progress and roofing material is on-site.
- Mason has started with material on-site.
- Fireproofing has started in the kitchen and central plant areas.
- MEP ductwork is in progress and some equipment is on-site.
- Hollow metal frames are on-site.
- Framers have started with material on-site.
- Mechanical platforms are poured.

LOWE ELEMENTARY - #6

DELLROSE



LOWE ELEMENTARY



Site Aerial

LOWE ELEMENTARY



CMU & Framing is Ongoing

WALLER ISD
CONSTRUCTION

LOWE ELEMENTARY



Mechanical Mezzanines are poured.



Fireproofing & Hangers are ongoing

WALLER ISD
CONSTRUCTION

MCREAVY ELEMENTARY - #7

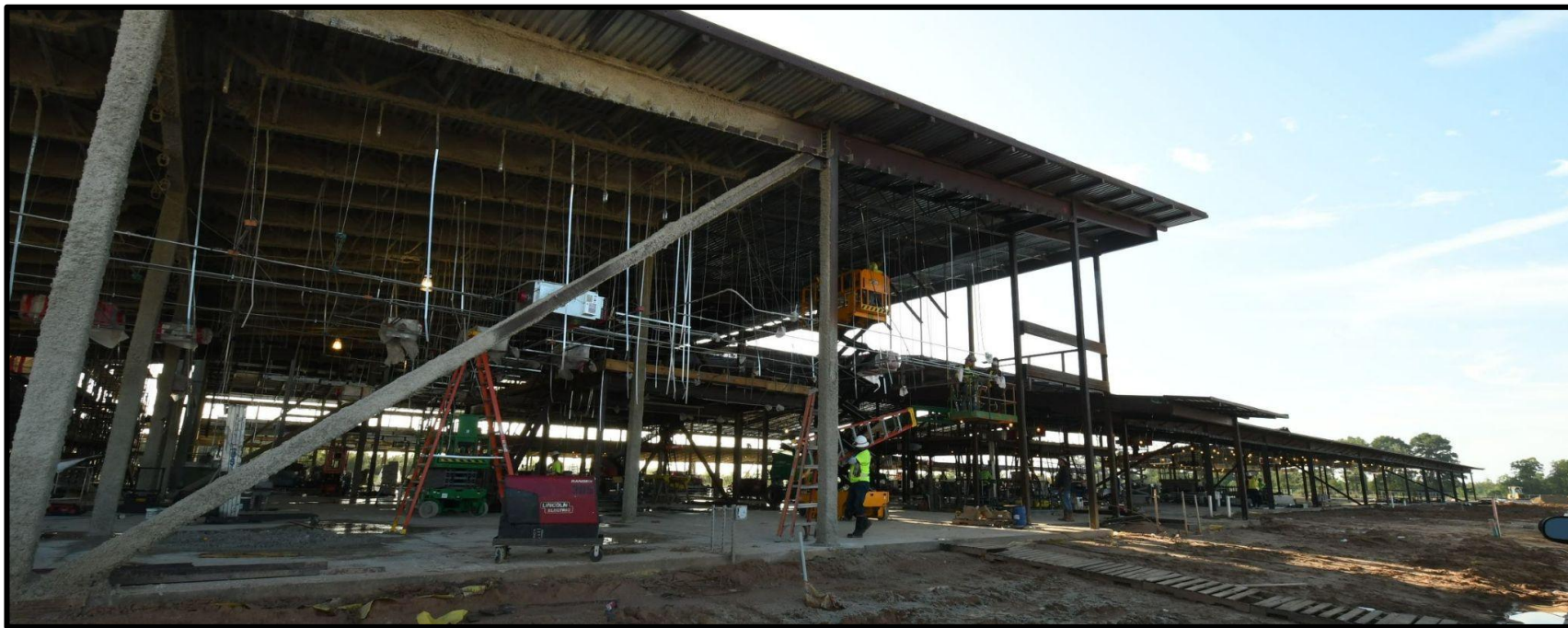
BRIDGELAND



MCREAVY ELEMENTARY



Aerial Site Overview



View of Front Entry

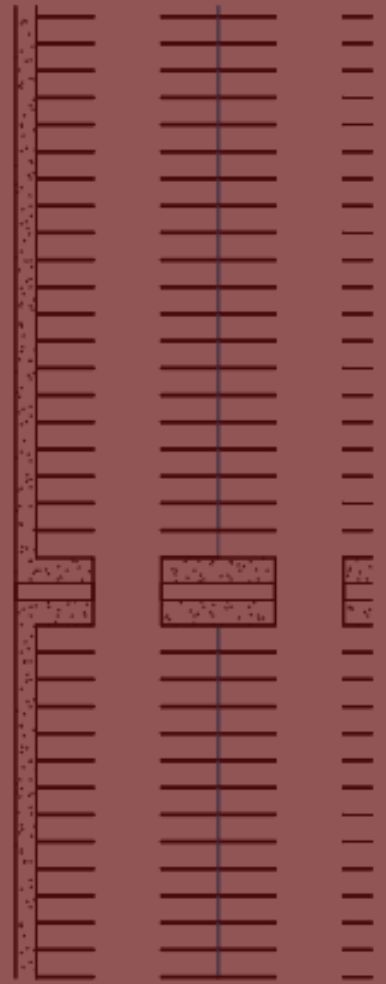
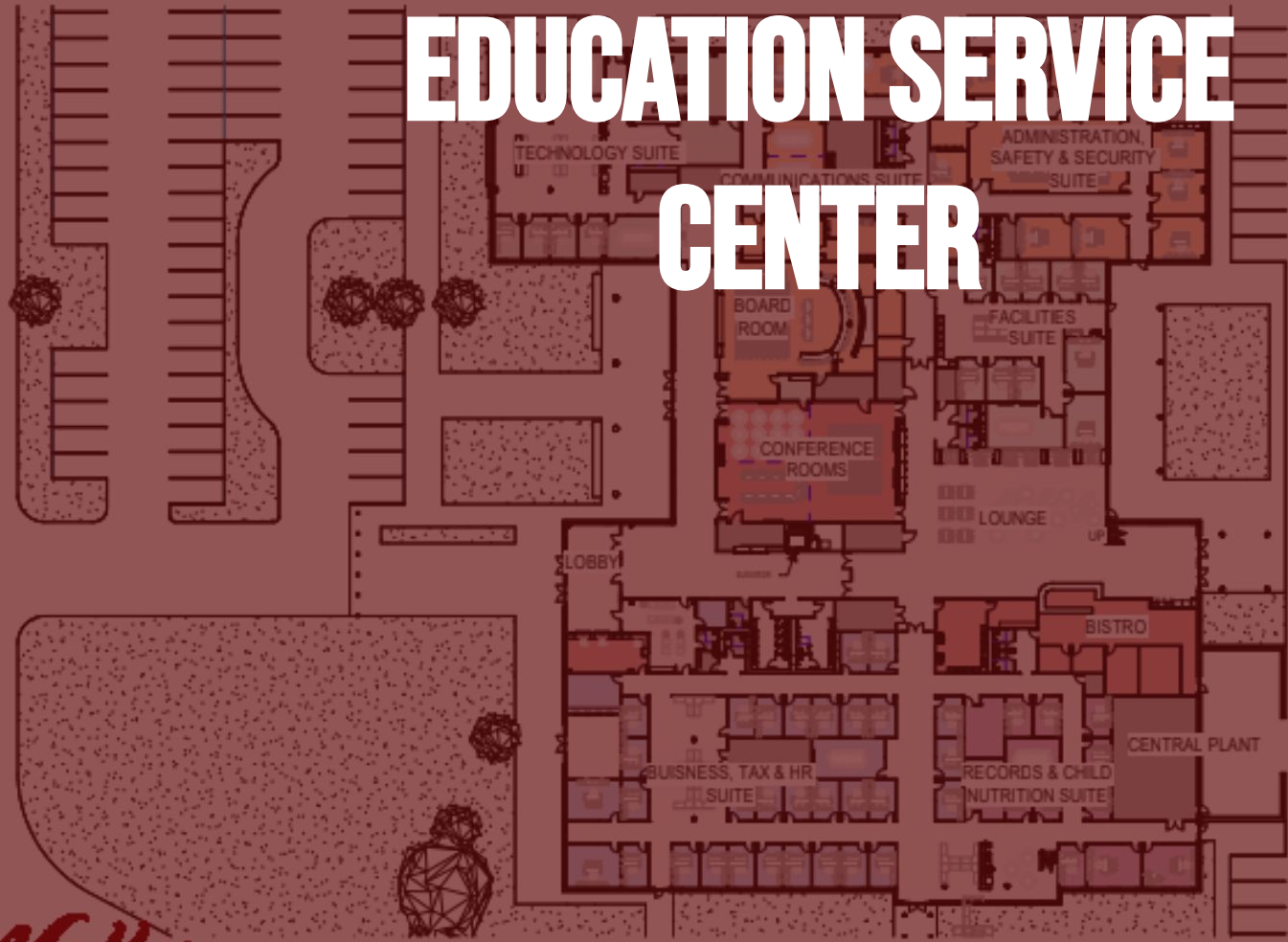


Progress at Kitchen - Masonry and Fireproofing



Ductwork is in progress

EDUCATION SERVICE CENTER



- We are currently working on Design Development.
- Stewart Builders is continuing to work on the construction budget.
- Current projected start is February 2024.

WALLER ISD
BOND 22



Site Layout

WALLER ISD
CONSTRUCTION

AGRICULTURAL SCIENCE FACILITY

AG SCIENCE FACILITY
IMAGE - FRONT FACADE

- We are at 100% construction documents.
- Ag Facility and Site Package subcontractor bids due October 18th.
- Current projected start is December 2023.

AGRICULTURAL FACILITY



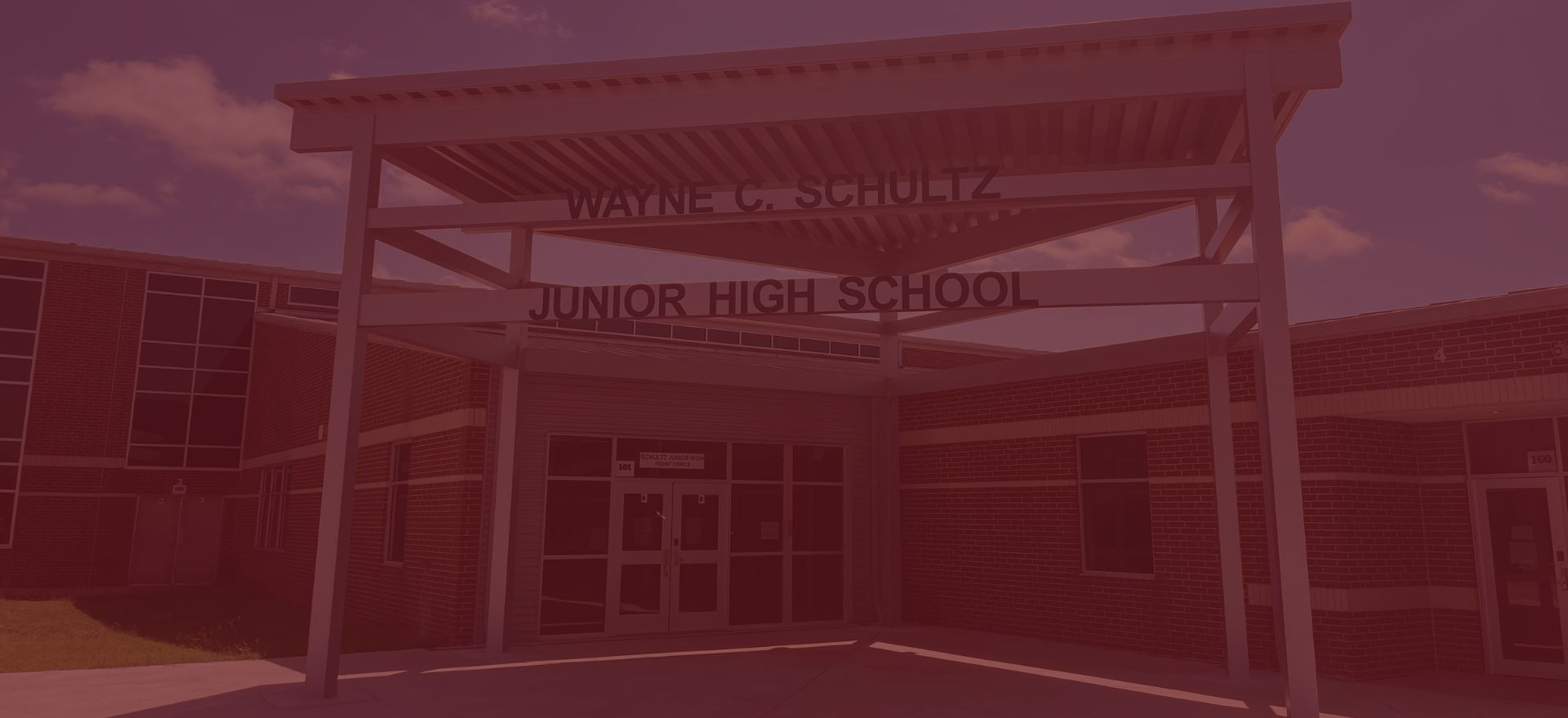
Overhead Rendering

AGRICULTURAL FACILITY



Front Elevation Rendering

SCHULTZ JUNIOR HIGH



WAYNE C. SCHULTZ

JUNIOR HIGH SCHOOL

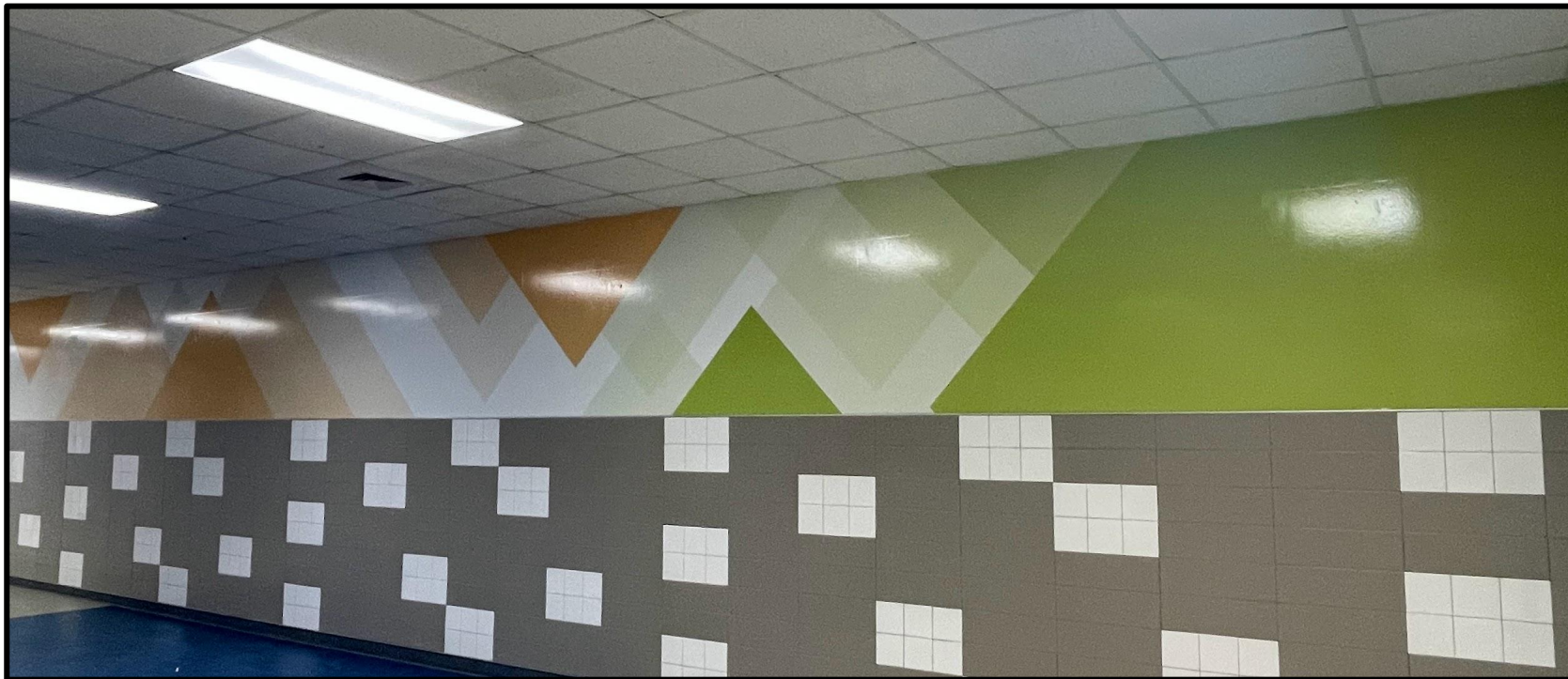
Schultz Junior High

- Corridor tile wainscot is complete.
- Graphics package installation has begun in select areas.
- Cafeteria microwave stations have been installed.
- New bleacher install & eastern bleacher demo is scheduled for late October/early November.
- New PE/Athletic lockers have been installed.

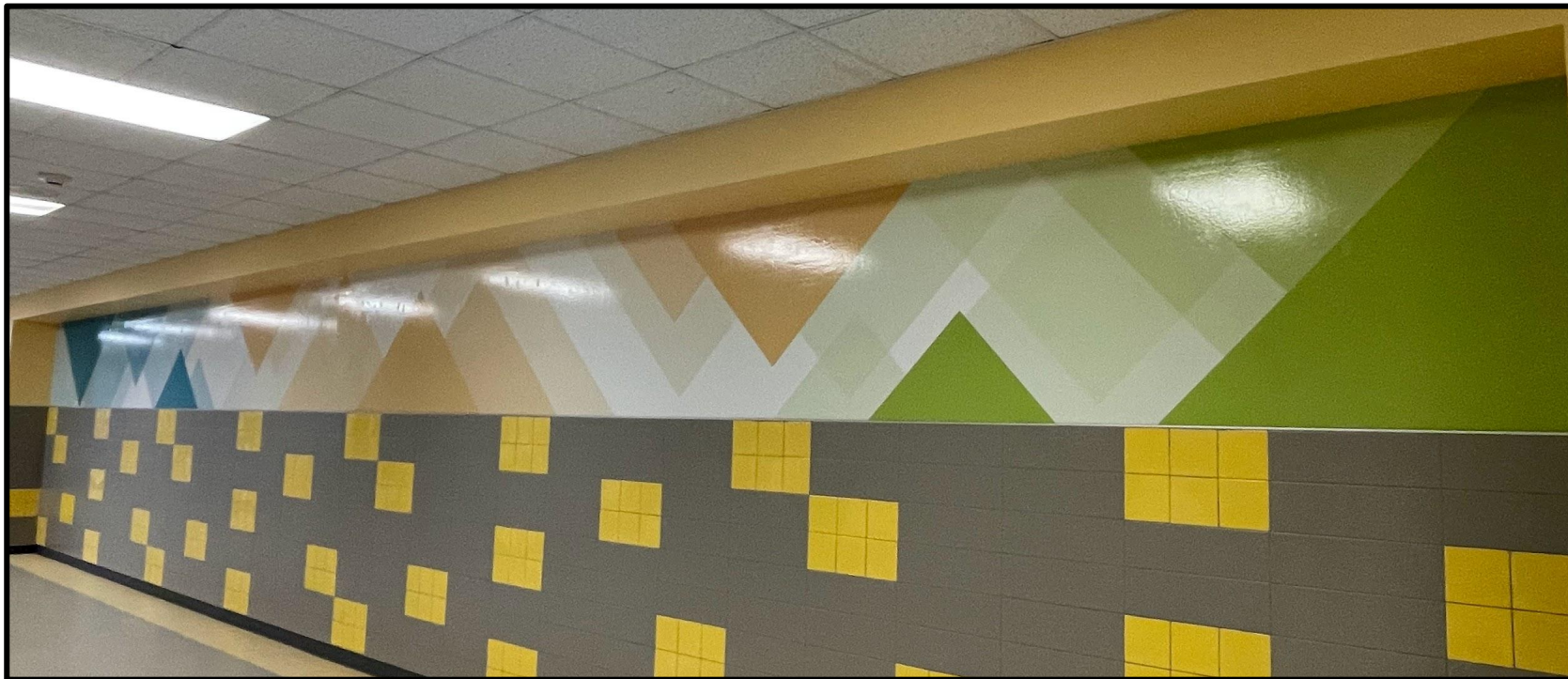
Schultz Junior High



Schultz Junior High



Schultz Junior High



A photograph of a classroom filled with children of various ages, from young children to teenagers. They are all expressing excitement, with many having their arms raised in the air. They are seated at small, light-colored tables with blue chairs. The classroom has white walls, a tiled ceiling, and various educational posters and supplies visible in the background. The entire image is overlaid with a semi-transparent red filter.

#ThankYouVoters

Waller
Independent School District